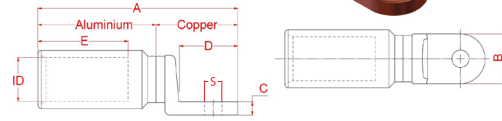
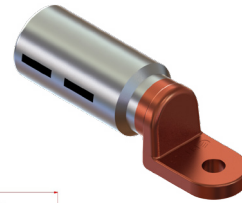


ALUMINIUM CABLE ACCESSORIES

FBLCB SERIES

Bi-metal Circuit Breaker lugs for Firstflex FLA Series Aluminium cables



Suitable for Firstflex FLA aluminium conductor cable and copper circuit breaker terminals.

The range of circuit breaker bi-metallic compression lugs are designed specifically for terminating fine stranded Firstflex FLA flexible aluminium cables. The aluminium barrel is sized to suit the larger overall diameters of flexible conductors, ensuring full strand containment and reliable crimp performance.

The lug comprises a high-conductivity aluminium barrel friction welded to an

electrolytic copper palm, providing a strong, corrosion-resistant transition joint. The barrel is pre-filled with oxide-inhibiting compound to minimise oxidation and maintain low contact resistance.

Suitable for hexagonal compression crimping using the specified A/F dies.

Where multiple crimps are required, crimp from the palm end toward the cable entry.

Conforms to: AS/NZS 4325.1 and IEC 61238-1-1

Firstflex Code	Circuit breaker Bi Metal Lugs	NOMINAL CONDUCTOR CSA mm ²	ID (+0.2 -0.1)	A (±2)	B (±1)	C (±0.5)	D (±1.0)	E (±1.5)	S (±0.25)	A/F HEX	CRIMP DIE	NO. OF CRIMPS
FBL70CBM8	Bi Metal Flexi Ali Narrow palm Crimp lug, 70mm M8	70	12	68	20	4	18	32	8.5	13.2	HT-70AL	1
FBL70CBM10	Bi Metal Flexi Ali Narrow palm Crimp lug, 70mm M10	70	12	68	20	4	18	32	10.5	13.2	HT-70AL	1
FBL70CBB	Bi Metal Flexi Ali Narrow palm Crimp lug, 70mm Blank	70		68	20	4	18	32		13.2	HT-70AL	1
FBL95CBM8	Bi Metal Flexi Ali Narrow palm Crimp lug, 95mm M8	95	14	105	20	5	23	60	8.5	17.3	HT-95/120AL	2
FBL95CBM10	Bi Metal Flexi Ali Narrow palm Crimp lug, 95mm M10	95	14	105	20	5	23	60	10.5	17.3	HT-95/120AL	2
FBL95CBM12	Bi Metal Flexi Ali Narrow palm Crimp lug, 95mm M12	95	14	105	20	5	23	60	13	17.3	HT-95/120AL	2
FBL95CBB	Bi Metal Flexi Ali Narrow palm Crimp lug, 95mm Blank	95		105	20	5	23	60		17.3	HT-95/120AL	2
FBL120CBM8	Bi Metal Flexi Ali Narrow palm Crimp lug, 120mm M8	120	17.5	115	25	6	29	60	8.5	22	HT-150/185AL	2
FBL120CBM10	Bi Metal Flexi Ali Narrow palm Crimp lug, 120mm M10	120	17.5	115	25	6	29	60	10.5	22	HT-150/185AL	2
FBL120CBM12	Bi Metal Flexi Ali Narrow palm Crimp lug, 120mm M12	120	17.5	115	25	6	29	60	13	22	HT-150/185AL	2
FBL120CBB	Bi Metal Flexi Ali Narrow palm Crimp lug, 120mm Blank	120		115	25	6	29	60		22	HT-150/185AL	2
FBL150CBM8	Bi Metal Flexi Ali Narrow palm Crimp lug, 150mm M8	150	18.7	115	25	6	29	60	8.5	22	HT-150/185AL	2
FBL150CBM10	Bi Metal Flexi Ali Narrow palm Crimp lug, 150mm M10	150	18.7	115	25	6	29	60	10.5	22	HT-150/185AL	2
FBL150CBM12	Bi Metal Flexi Ali Narrow palm Crimp lug, 150mm M12	150	18.7	115	25	6	29	60	13	22	HT-150/185AL	2
FBL150CBB	Bi Metal Flexi Ali Narrow palm Crimp lug, 150mm Blank	150		115	25	6	29	60		22	HT-150/185AL	2
FBL185CBM8	Bi Metal Flexi Ali Narrow palm Crimp lug, 185mm M8	185	19.5	115	25	6	29	60	8.5	22	HT-150/185AL	2
FBL185CBM10	Bi Metal Flexi Ali Narrow palm Crimp lug, 185mm M10	185	19.5	115	25	6	29	60	10.5	22	HT-150/185AL	2
FBL185CBM12	Bi Metal Flexi Ali Narrow palm Crimp lug, 185mm M12	185	19.5	115	25	6	29	60	13	22	HT-150/185AL	2
FBL185CBB	Bi Metal Flexi Ali Narrow palm Crimp lug, 185mm Blank	185		115	25	6	29	60		22	HT-150/185AL	2
FBL240CBM8	Bi Metal Flexi Ali Narrow palm Crimp lug, 240mm M8	240	24	122	30	8	35	60	8.5	28.4	HT-240/300AL	2
FBL240CBM10	Bi Metal Flexi Ali Narrow palm Crimp lug, 240mm M10	240	24	122	30	8	35	60	10.5	28.4	HT-240/300AL	2
FBL240CBM12	Bi Metal Flexi Ali Narrow palm Crimp lug, 240mm M12	240	24	122	30	8	35	60	13	28.4	HT-240/300AL	2
FBL240CBB	Bi Metal Flexi Ali Narrow palm Crimp lug, 240mm Blank	240		122	30	8	35	60		28.4	HT-240/300AL	2
FBL300CBM10	Bi Metal Flexi Ali Narrow palm Crimp lug, 300mm M10	300	26.5	122	30	8	35	60	10.5	28.4	HT-240/300AL	2
FBL300CBM12	Bi Metal Flexi Ali Narrow palm Crimp lug, 300mm M12	300	26.5	122	30	8	35	60	13	28.4	HT-240/300AL	2
FBL300CBM16	Bi Metal Flexi Ali Narrow palm Crimp lug, 300mm M16	300	26.5	122	30	8	35	60	17	28.4	HT-240/300AL	2
FBL300CBB	Bi Metal Flexi Ali Narrow palm Crimp lug, 300mm Blank	300		122	30	8	35	60		28.4	HT-240/300AL	2
FBL400CBM10	Bi Metal Flexi Ali Narrow palm Crimp lug, 400mm M10	400	30.3	155	35	10.5	50	70	10.5	39	ECW-H3D4/500AL	2
FBL400CBM12	Bi Metal Flexi Ali Narrow palm Crimp lug, 400mm M12	400	30.3	155	35	10.5	50	70	13	39	ECW-H3D4/500AL	2
FBL400CBM16	Bi Metal Flexi Ali Narrow palm Crimp lug, 400mm M16	400	30.3	155	35	10.5	50	70	17	39	ECW-H3D4/500AL	2
FBL400CBB	Bi Metal Flexi Ali Narrow palm Crimp lug, 400mm Blank	400		155	35	10.5	50	70		39	ECW-H3D4/500AL	2
FBL500CBM10	Bi Metal Flexi Ali Narrow palm Crimp lug, 500mm M10	500	32.5	155	35	10.5	50	70	10.5	39	ECW-H3D4/500AL	2
FBL500CBM12	Bi Metal Flexi Ali Narrow palm Crimp lug, 500mm M12	500	32.5	155	35	10.5	50	70	13	39	ECW-H3D4/500AL	2
FBL500CBM16	Bi Metal Flexi Ali Narrow palm Crimp lug, 500mm M16	500	32.5	155	35	10.5	50	70	17	39	ECW-H3D4/500AL	2
FBL500CBB	Bi Metal Flexi Ali Narrow palm Crimp lug, 500mm Blank	500		155	35	10.5	50	70		39	ECW-H3D4/500AL	2
FBL630CBM10	Bi Metal Flexi Ali Narrow palm Crimp lug, 630mm M10	630	38	175	37	13	65	70	10.5	43.2	RHU520-800	2
FBL630CBM12	Bi Metal Flexi Ali Narrow palm Crimp lug, 630mm M12	630	38	175	37	13	65	70	13	43.2	RHU520-800	2
FBL630CBM16	Bi Metal Flexi Ali Narrow palm Crimp lug, 630mm M16	630	38	175	37	13	65	70	17	43.2	RHU520-800	2
FBL630CBB	Bi Metal Flexi Ali Narrow palm Crimp lug, 630mm Blank	630		175	37	13	65	70		43.2	RHU520-800	2

Firstflex reserves the right to change materials and specifications without notice. Drawings, where shown, may not be to scale. Dimensions are metric and size may be approximate. All products should be installed and used in accordance to manufacturer's instruction provided.

