










New Zealand Product Range Catalogue

Elettrocanali is an Italian company with a history of more than 50 years. Today Elettrocanali has a product range of over five thousand products, all products comply with applicable International Product Standards and are manufactured to exacting tolerances from the highest quality materials.

     [elettrocanali.com](https://www.elettrocanali.com)

| Products Sections | Section start Pg |
|---|-------------------------|
|  Enclosure Boxes and Accessories | 1 |
|  Hinged Door Enclosures | 9 |
|  Industrial Plugs, Connectors and Sockets | 14 |
|  Slotted Trunking with Cover | 20 |
|  Air Conditioning Installation Ducting | 21 |
|  Ground Pits, Clips, Nylon Draw Tapes | 23 |
|  IP Rating Information | 24 |

Enclosure Boxes



Smooth Sided Enclosures - Plain Lid - (IP56)



| Product Code | Material | IP | Size mm |
|----------------|--------------------|----|----------------|
| EC410C4 | ABS Colour Grey | 56 | 100 x 100 x 50 |



| Product Code | Material | IP | Size mm |
|-----------------|--------------------|----|---------------|
| EC410C4R | ABS Colour Grey | 56 | 120 x 80 x 50 |



| Product Code | Material | IP | Size mm |
|----------------|--------------------|----|----------------|
| EC410C5 | ABS Colour Grey | 56 | 150 x 110 x 70 |



| Product Code | Material | IP | Size mm |
|----------------|--------------------|----|----------------|
| EC410C6 | ABS Colour Grey | 56 | 190 x 140 x 70 |



| Product Code | Material | IP | Size mm |
|----------------|--------------------|----|----------------|
| EC410C7 | ABS Colour Grey | 56 | 240 x 190 x 90 |



| Product Code | Material | IP | Size mm |
|----------------|--------------------|----|----------------|
| EC410C8 | ABS Colour Grey | 56 | 300 x 220x 120 |



| Product Code | Material | IP | Size mm |
|----------------|--------------------|----|-----------------|
| EC410C9 | ABS Colour Grey | 56 | 380 x 300 x 120 |



| Product Code | Material | IP | Size mm |
|-----------------|--------------------|----|-----------------|
| EC410C10 | ABS Colour Grey | 56 | 460 x 380 x 120 |

Enclosure Boxes

Smooth Sided Enclosures - Transparent Lid - (IP56)



| Product Code | Material | IP | Size mm |
|----------------|---------------------------------------|----|----------------|
| EC420C5 | ABS Colour Grey Transparent lid | 56 | 150 x 110 x 70 |



| Product Code | Material | IP | Size mm |
|----------------|---------------------------------------|----|----------------|
| EC420C6 | ABS Colour Grey Transparent lid | 56 | 190 x 140 x 70 |



| Product Code | Material | IP | Size mm |
|----------------|---------------------------------------|----|----------------|
| EC420C7 | ABS Colour Grey Transparent lid | 56 | 240 x 190 x 90 |



| Product Code | Material | IP | Size mm |
|----------------|---------------------------------------|----|-----------------|
| EC420C8 | ABS Colour Grey Transparent lid | 56 | 300 x 220 x 120 |



| Product Code | Material | IP | Size mm |
|----------------|---------------------------------------|----|-----------------|
| EC420C9 | ABS Colour Grey Transparent lid | 56 | 380 x 300 x 120 |



| Product Code | Material | IP | Size mm |
|-----------------|---------------------------------------|----|-----------------|
| EC420C10 | ABS Colour Grey Transparent lid | 56 | 460 x 380 x 120 |

Enclosure Boxes

Smooth Sided Enclosures - High Lid - [IP56]



| Product Code | Material | IP | Size mm |
|----------------|--------------------------------|----|-----------------|
| EC430C5 | ABS Colour Grey High Lid | 56 | 150 x 110 x 140 |



| Product Code | Material | IP | Size mm |
|----------------|--------------------------------|----|-----------------|
| EC430C6 | ABS Colour Grey High Lid | 56 | 190 x 140 x 140 |



| Product Code | Material | IP | Size mm |
|----------------|--------------------------------|----|-----------------|
| EC430C7 | ABS Colour Grey High Lid | 56 | 240 x 190 x 160 |



| Product Code | Material | IP | Size mm |
|----------------|--------------------------------|----|-----------------|
| EC430C8 | ABS Colour Grey High Lid | 56 | 300 x 220 x 180 |



| Product Code | Material | IP | Size mm |
|----------------|--------------------------------|----|-----------------|
| EC430C9 | ABS Colour Grey High Lid | 56 | 380 x 300 x 180 |



| Product Code | Material | IP | Size mm |
|-----------------|--------------------------------|----|-----------------|
| EC430C10 | ABS Colour Grey High Lid | 56 | 460 x 380 x 180 |

Enclosure Boxes

Smooth Sided Enclosures - Transparent High Lid - [IP56]



| Product Code | Material | IP | Size mm |
|----------------|--|----|-----------------|
| EC440C5 | ABS Colour Grey Transparent High Lid | 56 | 150 x 110 x 140 |



| Product Code | Material | IP | Size mm |
|----------------|--|----|-----------------|
| EC440C6 | ABS Colour Grey Transparent High Lid | 56 | 190 x 140 x 140 |



| Product Code | Material | IP | Size mm |
|----------------|--|----|-----------------|
| EC440C7 | ABS Colour Grey Transparent High Lid | 56 | 240 x 190 x 160 |



| Product Code | Material | IP | Size mm |
|----------------|--|----|-----------------|
| EC440C8 | ABS Colour Grey Transparent High Lid | 56 | 300 x 220 x 180 |



| Product Code | Material | IP | Size mm |
|----------------|--|----|-----------------|
| EC440C9 | ABS Colour Grey Transparent High Lid | 56 | 380 x 300 x 180 |



| Product Code | Material | IP | Size mm |
|-----------------|--|----|-----------------|
| EC440C10 | ABS Colour Grey Transparent High Lid | 56 | 460 x 380 x 180 |

Enclosure Boxes

Smooth Sided Enclosures - Plain Lid - IP56] Self Extinguishing VO - 960°C



| Product Code | Material | IP | Size mm |
|-----------------|-----------------------------------|----|----------------|
| EC410C4A | Self extinguishing Colour Grey | 56 | 100 x 100 x 50 |



| Product Code | Material | IP | Size mm |
|------------------|-----------------------------------|----|---------------|
| EC410C4RA | Self extinguishing Colour Grey | 56 | 120 x 80 x 50 |



| Product Code | Material | IP | Size mm |
|-----------------|--------------------|----|----------------|
| EC410C5A | ABS Colour Grey | 56 | 150 x 110 x 70 |



| Product Code | Material | IP | Size mm |
|-----------------|-----------------------------------|----|----------------|
| EC410C6A | Self extinguishing Colour Grey | 56 | 190 x 140 x 70 |



| Product Code | Material | IP | Size mm |
|-----------------|-----------------------------------|----|----------------|
| EC410C7A | Self extinguishing Colour Grey | 56 | 240 x 190 x 90 |



| Product Code | Material | IP | Size mm |
|-----------------|-----------------------------------|----|----------------|
| EC410C8A | Self extinguishing Colour Grey | 56 | 300 x 220x 120 |



| Product Code | Material | IP | Size mm |
|-----------------|-----------------------------------|----|-----------------|
| EC410C9A | Self extinguishing Colour Grey | 56 | 380 x 300 x 120 |



| Product Code | Material | IP | Size mm |
|------------------|-----------------------------------|----|-----------------|
| EC410C10A | Self extinguishing Colour Grey | 56 | 460 x 380 x 120 |

Enclosure Boxes

Smooth Sided Enclosures - Polycarbonate -IP67 -1/4 turn screw



| Product Code | Material | IP | Size mm |
|-----------------|------------------------------|----|----------------|
| EC492C4P | Polycarbonate Colour Grey | 67 | 110 x 110 x 60 |



| Product Code | Material | IP | Size mm |
|-----------------|------------------------------|----|----------------|
| EC492C5P | Polycarbonate Colour Grey | 67 | 160 x 115 x 75 |



| Product Code | Material | IP | Size mm |
|-----------------|------------------------------|----|----------------|
| EC492C6P | Polycarbonate Colour Grey | 67 | 200 x 150 x 85 |



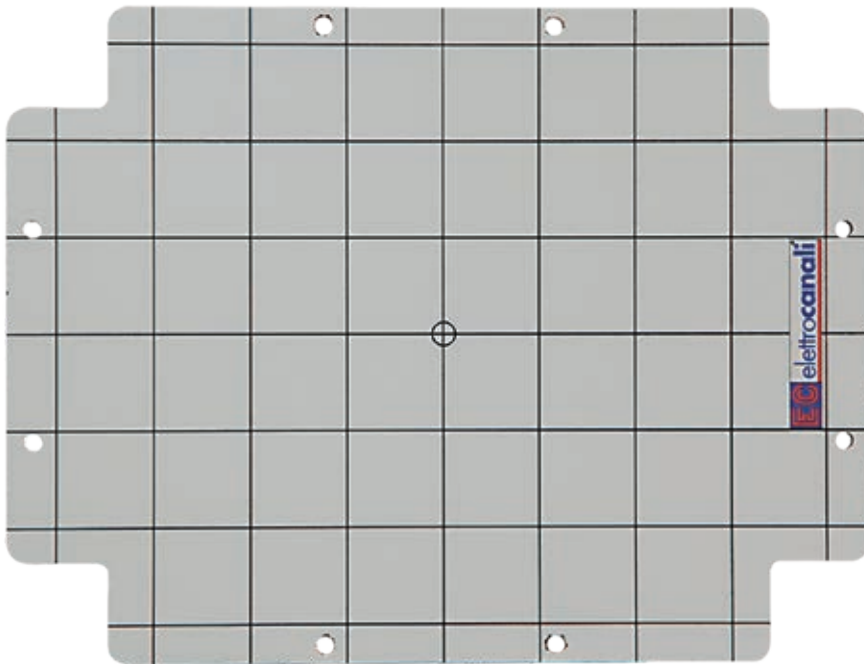
| Product Code | Material | IP | Size mm |
|-----------------|------------------------------|----|-----------------|
| EC492C7P | Polycarbonate Colour Grey | 67 | 250 x 200 x 100 |



| Product Code | Material | IP | Size mm |
|-----------------|------------------------------|----|-----------------|
| EC492C8P | Polycarbonate Colour Grey | 67 | 310 x 230 x 125 |

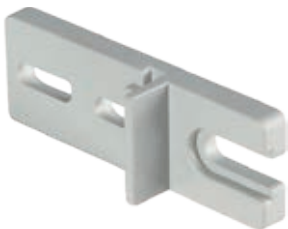
Enclosure Boxes

Smooth Sided Enclosure Accessories - Insulated Back Plate



| Product Code | Junction Box Type | Fits Box Size mm |
|-----------------|-------------------|------------------|
| EC451P6 | Smooth Sided | 190 x 140 |
| EC451P7 | Smooth Sided | 240 x 190 |
| EC451P8 | Smooth Sided | 300 x 220 |
| EC451P9 | Smooth Sided | 380 x 300 |
| EC451P10 | Smooth Sided | 460 x 380 |

Enclosure Accessories



Wall Fixing Bracket

| Product Code | Size For Enclosure |
|----------------|--|
| EC600SF | Fits All Enclosures Keeps IP rating and double insulation protection on wall mounted enclosures |



Safety Lock For Watertight Enclosures

| Product Code | Size For Enclosure |
|----------------|---------------------|
| EC600SC | Fits All Enclosures |

Junction Boxes

Cable Junction Boxes - [IP55]



| Product Code | Material | IP | Size mm |
|----------------|-----------------------------|----|--------------|
| EC411C1 | Polyethylene Colour Grey | 55 | 71 x 33 x 30 |



| Product Code | Material | IP | Size mm |
|----------------|-----------------------------|----|--------------|
| EC411C2 | Polyethylene Colour Grey | 55 | 65 x 65 x 30 |



| Product Code | Material | IP | Size mm |
|----------------|-----------------------------|----|--------------|
| EC411C3 | Polyethylene Colour Grey | 55 | 75 x 75 x 34 |



| Product Code | Material | IP | Size mm |
|----------------|-----------------------------|----|--------------|
| EC411C4 | Polyethylene Colour Grey | 55 | 90 x 90 x 34 |

Cable Junction Boxes with stepped glands - [IP44] Self extinguishing VO - 960°C



| Product Code | Material | IP | Size mm |
|-----------------|-----------------------------------|----|-----------|
| EC400C1A | Self extinguishing Colour Grey | 44 | ∅ 65 x 35 |



| Product Code | Material | IP | Size mm |
|-----------------|-----------------------------------|----|-----------|
| EC400C2A | Self extinguishing Colour Grey | 44 | ∅ 80 x 40 |



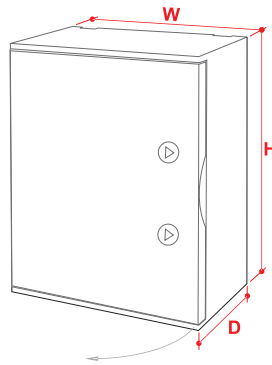
| Product Code | Material | IP | Size mm |
|-----------------|-----------------------------------|----|--------------|
| EC400C3A | Self extinguishing Colour Grey | 44 | 80 x 80 x 40 |

Hinged Door Enclosures

Polyester Enclosures - Grey - Plain Hinged Door - IP65



[V0] SELF-EXTINGUISHING IN LESS THAN 10 SECONDS

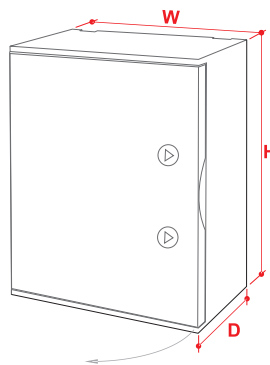


| Product Code | Material | IP | [] Enclosure size - Size mm |
|-----------------|--------------------------|-----------|------------------------------|
| EC625001 | Polyester Colour Grey | 65 | [1] W 270 x H 305 x D 170 |
| EC625002 | Polyester Colour Grey | 65 | [2] W 325 x H 430 x D 185 |
| EC625003 | Polyester Colour Grey | 65 | [3] W 435 x H 505 x D 215 |
| EC625004 | Polyester Colour Grey | 65 | [4] W 435 x H 655 x D 215 |
| EC625005 | Polyester Colour Grey | 65 | [5] W 545 x H 655 x D 265 |
| EC625006 | Polyester Colour Grey | 65 | [6] W 620 x H 810 x D 320 |

Polyester Enclosures - Grey - Transparent Window Door - IP65



[V0] SELF-EXTINGUISHING IN LESS THAN 10 SECONDS



| Product Code | Material | IP | [] Enclosure size - Size mm |
|-----------------|--------------------------------------|-----------|------------------------------|
| EC625011 | Grey Polyester Transparent window | 65 | [1] W 270 x H 305 x D 170 |
| EC625012 | Grey Polyester Transparent window | 65 | [2] W 325 x H 430 x D 185 |
| EC625013 | Grey Polyester Transparent window | 65 | [3] W 435 x H 505 x D 215 |
| EC625014 | Grey Polyester Transparent window | 65 | [4] W 435 x H 655 x D 215 |

Hinged Door Enclosures

Polyester Enclosure Accessories and Parts

Supporting our the range of hinged door enclosures are accessories that make them functional and adaptable for a wide range of commercial and industrial applications.



Hinged Door Enclosures

Polyester Enclosure Accessories and Parts



Polyester Hinged Enclosure Door- (For Replacement)

| Product Code | Size For Enclosure |
|------------------|--------------------|
| EC625001R | [1] W 270 x H 305 |
| EC625002R | [2] W 325 x H 430 |
| EC625003R | [3] W 435 x H 505 |
| EC625004R | [4] W 435 x H 655 |
| EC625005R | [5] W 545 x H 655 |
| EC625006R | [6] W 620 x H 810 |



Polyester Hinged Counter Door

| Product Code | Size For Enclosure |
|-----------------|--------------------|
| EC625022 | [2] W 325 x H 430 |
| EC625023 | [3] W 435 x H 505 |
| EC625024 | [4] W 435 x H 655 |



Insulated Back Plate

| Product Code | Size For Enclosure |
|-----------------|--------------------|
| EC625041 | [1] W 270 x H 305 |
| EC625042 | [2] W 325 x H 430 |
| EC625043 | [3] W 435 x H 505 |
| EC625044 | [4] W 435 x H 655 |
| EC625045 | [5] W 545 x H 655 |
| EC625046 | [6] W 620 x H 810 |



DIN Rail Uprights for Installing DIN Into Enclosure

| Product Code | Size For Enclosure |
|-----------------|------------------------------|
| EC625072 | [2] EC625002 |
| EC625073 | [3] EC625003 |
| EC625074 | [4] EC625004 [5] EC625005 |

Hinged Door Enclosures

Polyester Enclosure Accessories And Parts



DIN Rail with Support- EC625 ... Enclosures

| Product Code | Size For Enclosure |
|-----------------|--|
| EC625132 | [2] 12 module for 325 mm wide EC625 enclosures |
| EC625133 | [3 & 4] 18 module for 435 mm wide EC625 enclosures |
| EC625135 | [5] 24 module for 545 mm wide EC625 enclosures |



Cover Module for MCB and DIN Component Installation

| Product Code | Size For Enclosure |
|-----------------|--|
| EC625102 | [2] 12 module for 325 mm wide EC625 enclosures |
| EC625103 | [3 & 4] 18 module for 435 mm wide EC625 enclosures |



Blank Cover Module

| Product Code | Size For Enclosure |
|-----------------|--|
| EC625112 | [2] For 325 mm wide EC625 enclosures |
| EC625113 | [3 & 4] For 435 mm wide EC625 enclosures |
| EC625115 | [5] For 545 wide EC625 enclosures |



Deep Adjustment Back Plate Kit - All Sizes

| Product Code | Size For Enclosure |
|-----------------|---|
| EC625REG | 2 x Kits for 625002/625003 3 x Kits for 624004/625005 4 x Kits for 625006 |



Stainless Steel Brackets for Enclosure External Fixing - All Sizes

| Product Code | Size For Enclosure |
|----------------|---|
| EC625SI | 1 kit, With Four Stainless Steel Brackets |



Pole Mount Kit - EC625 ... Enclosures - Zinc Coated 100kg capacity

| Product Code | Size For Enclosure |
|-----------------|--|
| EC625SP1 | [1 & 2] 270 & 325 mm wide EC625 enclosures |
| EC625SP3 | [3 & 4] 435 mm wide EC625 enclosures |
| EC625SP5 | [5 & 6] 545 & 620 mm wide EC625 enclosures |

Hinged Door Enclosures

Polyester Enclosure Accessories And Parts



Safety lock with keys

| Product Code | Size For Enclosure |
|----------------|--|
| EC625SC | All 625... Enclosures Supplied with 2 matching keys |



Triangular Standard Lock - Spare

| Product Code | Size For Enclosure |
|----------------|-----------------------|
| EC625SR | All 625... Enclosures |



Triangular Spare Key

| Product Code | Size For Enclosure |
|----------------|-----------------------|
| EC625ST | All 625... Enclosures |



Spare Brass Insert Kit

| Product Code | Size For Enclosure |
|----------------|-------------------------------|
| EC625IO | For EC625REG (1 kit = 10Pcs) |

Industrial Plugs, Connectors and Sockets [EN60309]

Straight Plugs



Straight Plugs EN60309

| Product Code | Terminals/volts | Amps | IP | Designation |
|--------------|-----------------------|------|----|--------------|
| EC69070 | 2P + E - 230V | 16 | 44 | Single Phase |
| EC 69272 | 2P + E - 230V | 32 | 44 | Single Phase |
| EC 69076 | 3P + E - 380/400V | 32 | 44 | Three Phase |
| EC 69078 | 3P + N + E - 380/400V | 32 | 44 | Three Phase |
| EC 69071 | 2P + E - 230V | 16 | 67 | Single Phase |
| EC 69274 | 3P + E - 230V | 16 | 67 | * |
| EC 69073 | 3P + E - 380/400V | 16 | 67 | Three Phase |
| EC 69075 | 3P + N + E - 380/400V | 16 | 67 | Three Phase |
| EC 69275 | 3P + N + E - 230V | 16 | 67 | * |
| EC 69276 | 2P + E - 230V | 32 | 67 | Three Phase |
| EC 69077 | 3P + E - 380/400V | 32 | 67 | Three Phase |
| EC 69277 | 3P + E - 230V | 32 | 67 | * |
| EC 69079 | 3P + N + E - 380/400V | 32 | 67 | Three Phase |
| EC 69370 | 3P + E - 380/400V | 63 | 67 | Three Phase |
| EC 69371 | 3P + N + E - 380/400V | 63 | 67 | Three Phase |
| EC 69673 | 3P + E - 380/400V | 125 | 67 | Three Phase |
| EC 69675 | 3P + N + E - 380/400V | 125 | 67 | Three Phase |

* Note: voltage rated 220-250V for special applications

Industrial Plugs, Connectors and Sockets [EN60309]

Straight Connectors



Straight Connectors EN60309

| Product Code | Terminals/volts | Amps | IP | Designation |
|--------------|-----------------------|------|----|--------------|
| EC69080 | 2P + E - 230V | 16 | 44 | Single Phase |
| EC 69282 | 2P + E - 230V | 32 | 44 | Single Phase |
| EC 69086 | 3P + E - 380/400V | 32 | 44 | Three Phase |
| EC 69088 | 3P + N + E - 380/400V | 32 | 44 | Three Phase |
| EC 69081 | 2P + E - 230V | 16 | 67 | Single Phase |
| EC 69284 | 3P + E - 230V | 16 | 67 | * |
| EC 69285 | 3P + N + E - 230V | 16 | 67 | * |
| EC 69083 | 3P + E - 380/400V | 16 | 67 | Three Phase |
| EC 69085 | 3P + N + E - 380/400V | 16 | 67 | Three Phase |
| EC 69286 | 2P + E - 230V | 32 | 67 | Single Phase |
| EC 69287 | 3P + E - 230V | 32 | 67 | * |
| EC 69087 | 3P + E - 380/400V | 32 | 67 | Three Phase |
| EC 69089 | 3P + N + E - 380/400V | 32 | 67 | Three Phase |
| EC 69380 | 3P + E - 380/400V | 63 | 67 | Three Phase |
| EC 69381 | 3P + N + E - 380/400V | 63 | 67 | Three Phase |
| EC 69683 | 3P + E - 380/400V | 125 | 67 | Three Phase |
| EC 69685 | 3P + N + E - 380/400V | 125 | 67 | Three Phase |

* Note: voltage rated 220-250V for special applications

Additional Plugs And Leads



3 Way Multiplier And Plug

| Product Code | Terminals/volts | Amps | IP | Designation |
|--------------|-----------------|------|----|--------------|
| EC690703 | 2P + E - 230V | 16 | 44 | Single Phase |



Industrial Extension Lead length 10m

| Product Code | Terminals/volts | Amps | IP | Designation |
|--------------|----------------------------------|------|----|--------------|
| EC699P20 | 2P + E 3 core 2.5mm ² | 16 | 67 | Single Phase |

Industrial Plugs, Connectors and Sockets (EN60309)

Angled Panel Mounted Sockets



Angled Panel Mount Socket EN60309

| Product Code | Terminals/volts | Amps | IP | Designation |
|-----------------|-----------------|------|----|--------------|
| EC 69050 | 2P + E - 230V | 16 | 44 | Single Phase |



Angled Panel Mount Socket EN60309

| Product Code | Terminals/volts | Amps | IP | Designation |
|-----------------|-----------------------|------|----|--------------|
| EC 69051 | 2P + E - 230V | 16 | 67 | Single Phase |
| EC 69055 | 3P + N + E - 380/400V | 16 | 67 | Three Phase |
| EC 69256 | 2P + E - 230V | 32 | 67 | Single Phase |
| EC 69058 | 3P + E - 380/400V | 32 | 67 | Three Phase |
| EC 69059 | 3P + N + E - 380/400V | 32 | 67 | Three Phase |
| EC 69350 | 3P + E - 380/400V | 63 | 67 | Three Phase |
| EC 69351 | 3P + N + E - 380/400V | 63 | 67 | Three Phase |
| EC 69655 | 3P + N + E - 380/400V | 125 | 67 | Three Phase |



Angled Wall Mounted Surface Sockets



Angled Wall Mounted Surface Sockets EN60309

| Product Code | Terminals/volts | Amps | IP | Designation |
|------------------|-----------------------|------|----|--------------|
| EC 690501 | 2P + E - 230V | 16 | 44 | Single Phase |
| EC 692521 | 2P + E - 230V | 32 | 44 | Single Phase |
| EC 690511 | 2P + E - 230V | 16 | 67 | Single Phase |
| EC 690571 | 3P + E - 380/400V | 32 | 67 | Three Phase |
| EC 690591 | 3P + N + E - 380/400V | 32 | 67 | Three Phase |



Straight Wall Mounted Surface Sockets



Straight Wall Mounted Surface Sockets EN60309

| Product Code | Terminals/volts | Amps | IP | Designation |
|-------------------|-----------------|------|----|--------------|
| EC 690501D | 2P + E - 230V | 16 | 44 | Single Phase |
| EC 692521D | 2P + E - 230V | 32 | 44 | Single Phase |
| EC 690511D | 2P + E - 230V | 16 | 67 | Single Phase |

Angled Wall Mounted Appliance Inlets



Angled Wall Mounted Appliance Inlets EN60309

| Product Code | Terminals/volts | Amps | IP | Designation |
|------------------|-----------------------|------|----|--------------|
| EC 690701 | 2P + E - 230V | 16 | 44 | Single Phase |
| EC 690721 | 3P + E - 380/400V | 16 | 44 | Three Phase |
| EC 690741 | 3P + N + E - 380/400V | 16 | 44 | Three Phase |
| EC 692721 | 2P + E - 230V | 32 | 44 | Single Phase |
| EC 690761 | 3P + E - 380/400V | 32 | 44 | Three Phase |
| EC 690781 | 3P + N + E - 380/400V | 32 | 44 | Three Phase |
| EC 690711 | 2P + E - 230V | 16 | 67 | Single Phase |
| EC 690731 | 3P + E - 380/400V | 16 | 67 | Three Phase |
| EC 690751 | 3P + N + E - 380/400V | 16 | 67 | Three Phase |
| EC 692761 | 2P + E - 230V | 32 | 67 | Single Phase |
| EC 690771 | 3P + E - 380/400V | 32 | 67 | Three Phase |
| EC 690791 | 3P + N + E - 380/400V | 32 | 67 | Three Phase |

Industrial Plugs, Connectors and Sockets (EN60309)

Wall Mounted Interlocked Horizontal Sockets



Wall Mounted Interlocked Horizontal Sockets EN60309

| Product Code | Terminals/volts | Amps | IP | Designation |
|------------------|-----------------------|------|----|--------------|
| EC 690911 | 2P + E - 230V | 16 | 65 | Single Phase |
| EC 690951 | 3P + N + E - 380/400V | 16 | 65 | Three Phase |
| EC 692961 | 2P + E - 230V | 32 | 65 | Single Phase |
| EC 690991 | 3P + N + E - 380/400V | 32 | 65 | Three Phase |

Wall Mounted Interlocked Vertical Sockets



Wall Mounted Interlocked Horizontal Sockets EN60309

| Product Code | Terminals/volts | Amps | IP | Designation |
|-------------------|-----------------------|------|----|--------------|
| EC 6909141 | 2P + E - 230V | 16 | 65 | Single Phase |
| EC 6909541 | 3P + N + E - 380/400V | 16 | 65 | Three Phase |
| EC 6929641 | 2P + E - 230V | 32 | 65 | Single Phase |
| EC 6929741 | 3P + E - 230V | 32 | 65 | * |
| EC 6909941 | 3P + N + E - 380/400V | 32 | 65 | Three Phase |
| EC 6935041 | 3P + E - 380/400V | 63 | 65 | Three Phase |
| EC 6935141 | 3P + N + E - 380/400V | 63 | 65 | Three Phase |

* Note: voltage rated 220-250V for special applications

Empty Distribution Boards - Transparent And Lockable Cover - (IP65)

These empty distribution boards can be fitted with panel mounted sockets and configured for a range of control options. They can be fitted with switches, MCB's, RCBO's, and/or Din Mount control devices such as surge protection, timers, relays, Indicators.



Empty Distribution Board - for DIN Mount Device Controlled Socket Outlets

| Product Code | Modules / Sockets | Socket Rating | Dimensions W,H,D |
|-----------------|-------------------|---------------|------------------|
| EC 69011 | 4 / 2 | 16 /32 amps | 105 x 337 X 95 |



Empty Distribution Board - for DIN Mount Device Controlled Socket Outlets

| Product Code | Modules / Sockets | Socket Rating | Dimensions W,H,D |
|-----------------|-------------------|---------------|------------------|
| EC 69012 | 4 / 3 | 16 /32 amps | 105 x 430 x 95 |

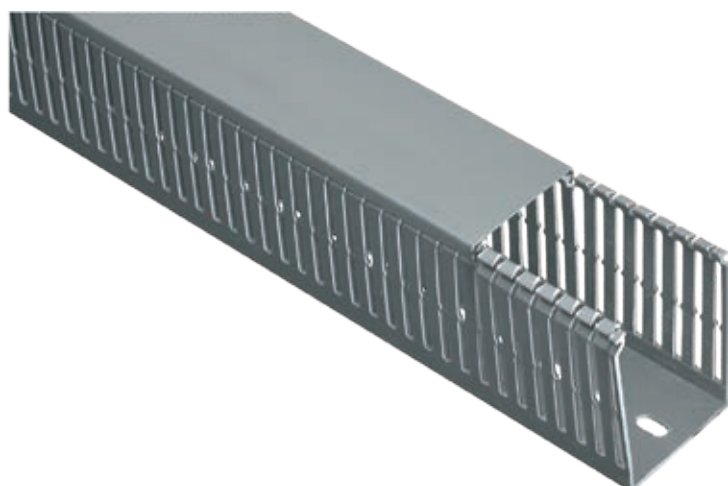


Empty Distribution Board - for DIN Mount Device Controlled Socket Outlets

| Product Code | Modules / Sockets | Socket Rating | Dimensions W,H,D |
|-----------------|-------------------|---------------|------------------|
| EC 69013 | 8 / 4 | 16 /32 amps | 200 x 430 x 95 |

Narrow Slotted Trunking With Cover

PVC Narrow Slotted Trunking With Cover 4/6/4 - Self Extinguishing



Material Polyvinyl chloride (PVC)
 Made in Italy
 Colour Grey
 Self Extinguishing
 Standard Length = 2.0 metres

| Product Code | Dimensions mm | Product Code | Dimensions mm |
|----------------|---------------|------------------|---------------|
| ECS2525 | 25 x 25 | ECS6080 | 60 x 80 |
| ECS2540 | 25 x 40 | ECS60100 | 60 x 100 |
| ECS2560 | 25 x 60 | ECS8040 | 80 x 40 |
| ECS2580 | 25 x 80 | ECS8060 | 80 x 60 |
| ECS4025 | 40 x 25 | ECS8080 | 80 x 80 |
| ECS4040 | 40 x 40 | ECS80100 | 80 x 100 |
| ECS4060 | 40 x 60 | ECS10060 | 100 x 60 |
| ECS4080 | 40 x 80 | ECS10080 | 100 x 80 |
| ECS6060 | 60 x 60 | ECS100100 | 100 x 100 |

Air Conditioning Installation Ducting

Trunking Systems For Air Conditioning Installation



| Product Code | Description | Dimensions mm |
|------------------|------------------------------|----------------|
| EC9008060 | Air Con Duct With Cover IP40 | 80 x 60 - 2mtr |



| Product Code | Description | Dimensions mm |
|------------------|------------------------|---------------|
| EC9108060 | Internal Angle (Elbow) | 80 x 60 |



| Product Code | Description | Dimensions mm |
|------------------|-----------------------|---------------|
| EC9208060 | External Angle (Bend) | 80 x 60 |



| Product Code | Description | Dimensions mm |
|------------------|-------------|---------------|
| EC9308060 | Flat Angle | 60 x 80 |



| Product Code | Description | Dimensions mm |
|------------------|----------------|---------------|
| EC9408060 | Straight Joint | 80 x 60 |



| Product Code | Description | Dimensions mm |
|------------------|-------------|---------------|
| EC9508060 | T- Joint | 80 x 60 |



| Product Code | Description | Dimensions mm |
|------------------|-------------|---------------|
| EC9608060 | End Cap | 80 x 60 |



| Product Code | Description | Dimensions mm |
|------------------|--------------------------|---------------|
| EC9708060 | Straight Joint (Ceiling) | 80 x 60 |

Trunking systems For Air Conditioning Installation



| Product Code | Description | Dimensions mm |
|------------------|-------------------|---------------|
| EC9808060 | Bent Joint (Wall) | 80 x 60 |



| Product Code | Description | Dimensions mm |
|----------------|--------------------------|-----------------|
| EC90402 | Outdoor Unit Floor Mount | 90 x 80 x 450 |
| EC90403 | Floor Mount End Cap | End Cap 90 x 80 |



| Product Code | Description | Dimensions mm |
|---------------|--|---------------|
| EC901Y | Universal Fitting for Flexible Drain Pipe 16mm | 16 |



| Product Code | Description | Dimensions |
|-------------------|---------------------|---------------|
| EC9906FE16 | Flexible Drain Pipe | 16mm x 30mtrs |

Ground Pits, Clips, Nylon Draw Tapes

Ground Access Pits



| Product Code | Description | Dimensions W,D,H mm |
|-----------------|-------------------------------------|---------------------|
| ECPOZ.25 | Ground Access Pit Box Watertight | 250 x 250x 250 |
| ECPOZ.30 | Ground Access Pit Box | 300 x 300 x 300 |
| ECPOZ.40 | Ground Access Pit Box | 400 x 400 x400 |

Note: ground pits are non trafficable
Plastic material
IP40

Halogen Free Conduit Clip



| Product Code | Description | Dimensions mm / QTY |
|---------------|-------------------|---------------------|
| ECCF16 | Grey Conduit Clip | 16 / 100 |
| ECCF20 | Grey Conduit Clip | 20 / 100 |
| ECCF25 | Grey Conduit Clip | 25 / 100 |
| ECCF32 | Grey Conduit Clip | 32 / 50 |
| ECCF40 | Grey Conduit Clip | 40 / 50 |
| ECCF50 | Grey Conduit Clip | 50 / 25 |

Nylon Draw Tape





| Product Code | Description | Dimensions mm |
|----------------|--------------------|------------------|
| ECS4-10 | Flexible Draw tape | Dia 4mm - 10 mtr |
| ECS4-15 | Flexible Draw tape | Dia 4mm - 15 mtr |
| ECS4-20 | Flexible Draw tape | Dia 4mm - 20 mtr |
| ECS4-25 | Flexible Draw tape | Dia 4mm - 25 mtr |
| ECS4-30 | Flexible Draw tape | Dia 4mm - 30 mtr |


Ingress Protection (IP) ratings, defined by IEC standard 60529, classify an electrical enclosure's sealing effectiveness against dust (first digit, 0-6) and water (second digit, 0-8)


IP (Ingress Protection) Ratings Guide


SOLIDS


- 1**  Protected against a solid object greater than 50mm such as a hand.

- 2**  Protected against a solid object greater than 12.5mm such as a finger.

- 3**  Protected against a solid object greater than 2.5mm such as a screwdriver.

- 4**  Protected against a solid object greater than 1mm such as a wire.

- 5**  Dust Protected. Limited ingress of dust permitted. Will not interfere with operation of equipment. Two to eight hours.

- 6**  Dust Tight. No ingress of dust. Two to eight hours.

WATER

- 1**  Protected against vertically falling drops of water. Limited ingress permitted.

- 2**  Protected against vertically falling drops of water with enclosure tilted up to 15° from the vertical. Limited ingress permitted.

- 3**  Protected against sprays of water up to 60° from the vertical. Limited ingress permitted for three minutes.

- 4**  Protected against water splashed from all directions. Limited ingress permitted.

- 5**  Protected against jets of water. Limited ingress permitted.

- 6**  Water from heavy seas or water projected in powerful jets shall not enter the enclosure in harmful quantities.

- 7**  Protected against the effects of immersion in water between 15cm and 1m for 30 minutes.

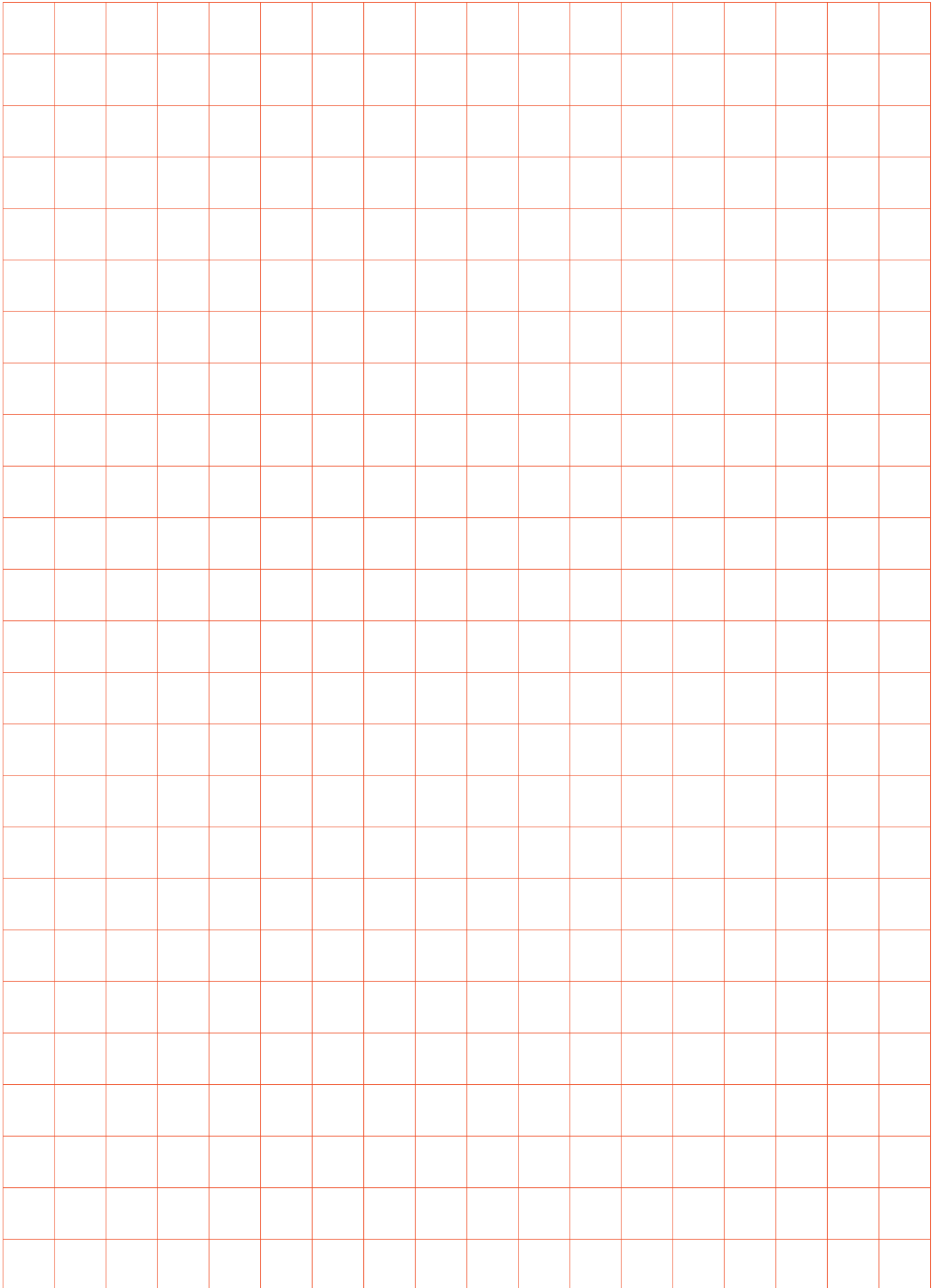
- 8**  Protected against the effects of immersion in water under pressure for long periods.

Rating Example:

IP65

Ingress Protection

Design Space





Active Electrical Suppliers
Support Office
27 O'Rorke Rd Penrose Auckland
Ph: 09 5557741
email: admin@goactive.nz
www.goactive.nz



Telfers Electrical
67 Fitzgerald Avenue, Christchurch Central City
Christchurch 8011 New Zealand
Ph: 03 3661814
email: hello@telfer.co.nz
www.telfers.co.nz